

Welcome Back!



Release of 2024 N-Level Results



1.45pm

- Opening Address by Principal
- Briefing on Post N Level- Progression
- Announcement of School Results

2.00pm

- Returning of Result Slips by FTs

Join our Alumni Community!



<https://go.gov.sg/jyalumni>

Dear students,

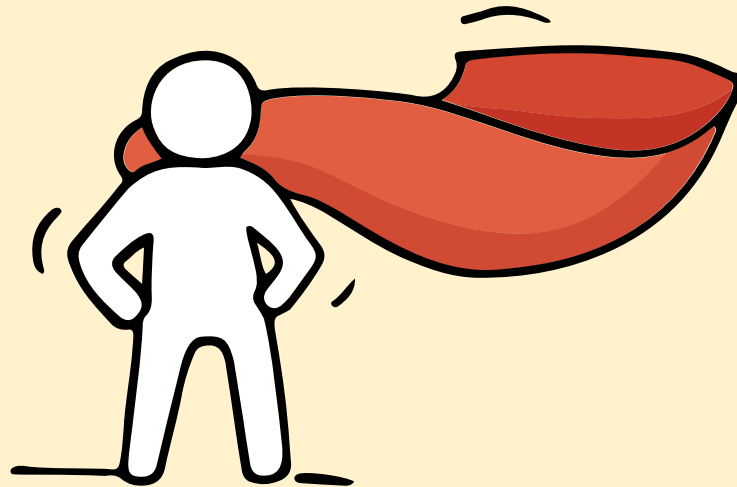
You have worked hard to reach this stage. Let's celebrate your efforts!



Finally, we are going to get our results!



Remember that while **everyone's educational journey is different, we can each have a fulfilling outcome!**



Thinking about Your Next Step?

Consider these questions...

Who am I?



In the infographic, you can find resources which can help you make informed decisions.

PLANNING YOUR NEXT STEP

These resources will help you chart your path ahead:



• What's Next Brochure
<https://go.gov.sg/whats-next-nlevel>



• Contact the ECG Centre @ MOE
<https://go.gov.sg/moe-ecg-centre>



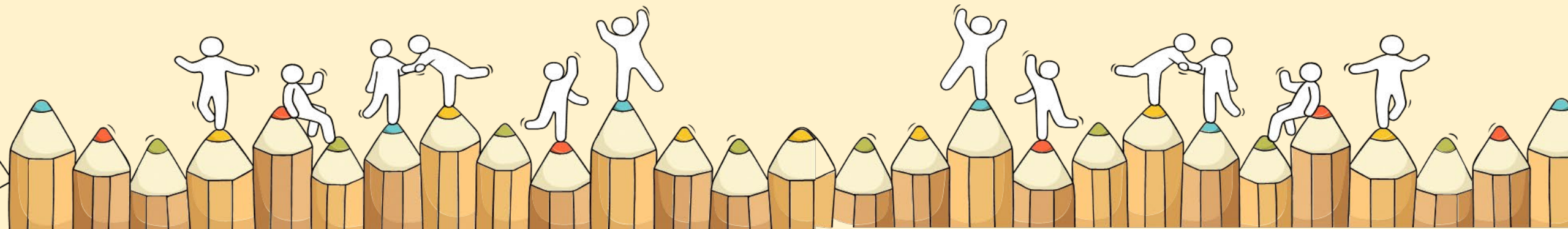
• MySkillsFuture Student Portal
<https://go.gov.sg/MySFSec>



• Chat with your school's ECG Counsellor

Admissions Exercises

Things to note



Details of Admissions Exercises

You can find the details of the various admissions exercises from the **Post-Secondary Admissions Exercises booklet** that can be downloaded from:

<https://www.moe.gov.sg/post-secondary/admissions>

- DPP
- PFP
- Joint Intake Exercise 'N' / 'E'
- NAFA Foundation Programme



A Guide to

Post-Secondary Admissions Exercises

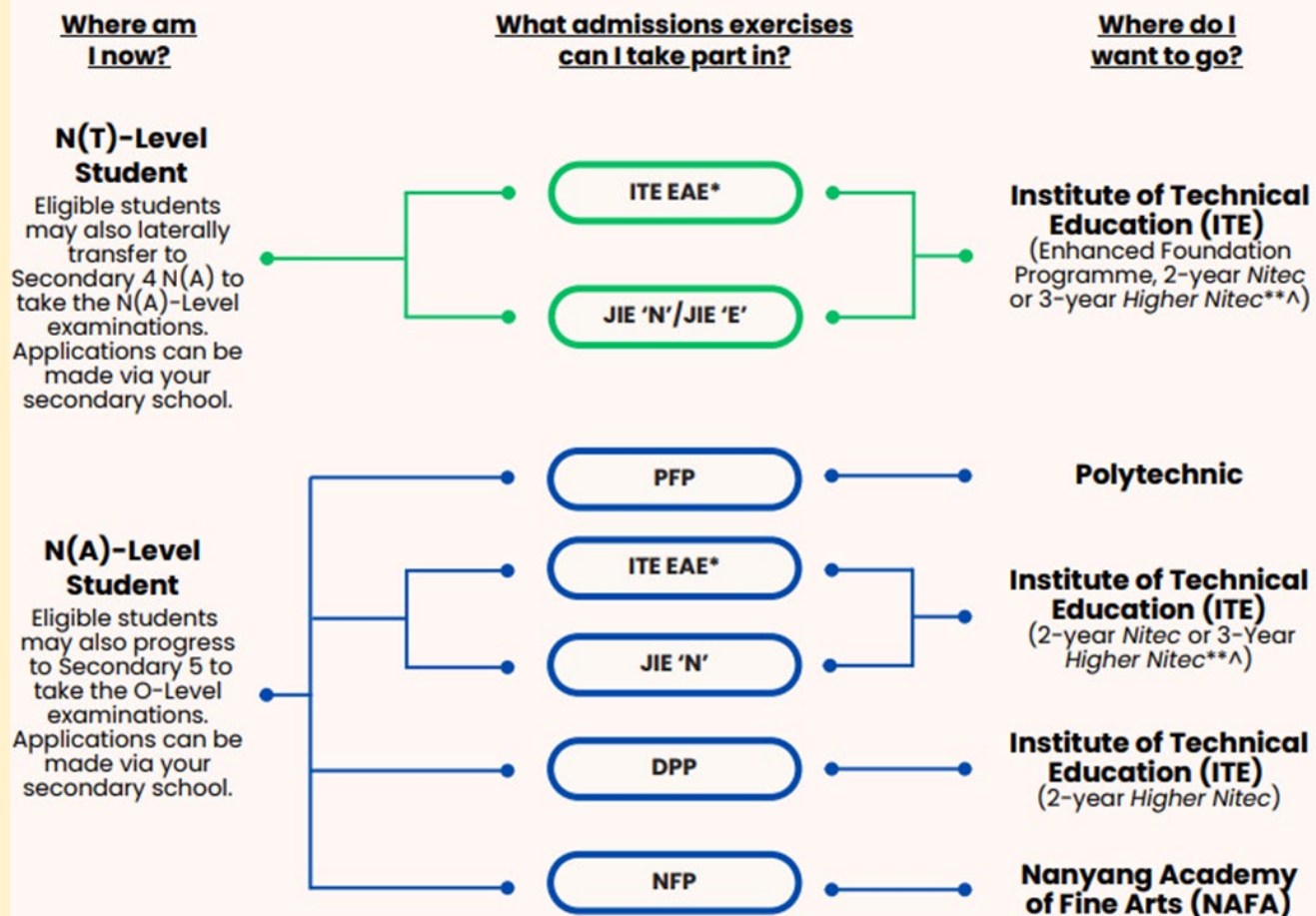
The various pathways you could explore after secondary school that provide opportunities for continuous learning



Ministry of Education
SINGAPORE



Post-Secondary Admissions Exercises for N-Level Students










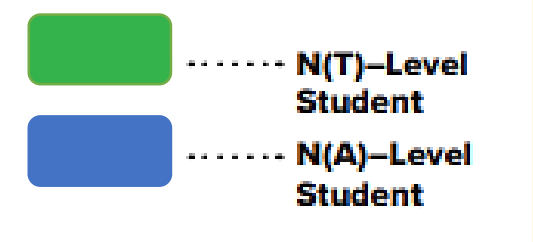
<https://www.moe.gov.sg/post-secondary/admissions>



For more information on applying to these courses, you can visit <https://www.moe.gov.sg/post-secondary/admissions>

For the list of 3-year Higher Nitec courses, please visit <https://www.ite.edu.sg/courses/full-time-courses/nitec-and-3-year-higher-nitec>

Application Timeline

Admissions Exercises	JIE 'N'  	PFP 
	JIE 'E' 	DPP 
	NFP 	
	DPP 	
	(1 st window of applications)	(2 nd window of applications)
Application Period	Dec 2024	Jan 2025



 **N(T)–Level Student**
 **N(A)–Level Student**

Details of Admissions Exercises



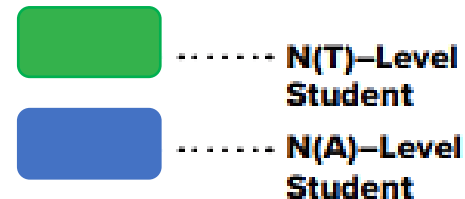
JIE 'N'/JIE 'E' – Joint Intake Exercise

The JIE 'N' is for 2-year *Nitec* or 3-year *Higher Nitec* courses offered by ITE. The JIE 'E' is for GCE N(T) students to apply for the 3-year *Nitec* course with Enhanced *Nitec* Foundation Programme.

JIE 'N'/JIE 'E': go.gov.sg/applyjie

Refer to the link for Minimum Entry Requirements (MERs) and aggregate cut off

Application Period: Mon 16 Dec 2024 (2.30pm) to Thu 19 Dec 2024 (5pm)



Details of Admissions Exercises



PFP – Polytechnic Foundation Programme

PFP is a one-year programme that offers a practice-oriented curriculum taught by polytechnic lecturers to better prepare polytechnic-bound Secondary 4 N(A) students for entry into selected polytechnic diploma courses. PFP students are given provisional places in diploma programmes, subject to them passing all modules in the one-year programme.

PFP: go.gov.sg/pfp

Entry Requirements:

- Gross ELMAB3 score of 12 points or better (excluding CCA bonus points).
- Need to meet minimum subject-specific requirement. Check the PFP website for info.

Application Period: After O Level Results release (Check PFP website in January 2025)



..... N(A)-Level Student

Details of Admissions Exercises



DPP – Direct-Entry-Scheme to Polytechnic Programme

DPP allows Secondary 4N(A) students to be admitted directly into selected 2-year *Higher Nitec* programmes at ITE without having to sit for the O-Level examinations or undergo a *Nitec* programme. DPP students who successfully complete their *Higher Nitec* courses at ITE and attain the required qualifying Grade Point Average (GPA) scores are guaranteed a place in a polytechnic diploma course mapped to their *Higher Nitec* course.

DPP: go.gov.sg/applydpp

JIE 'H'

Entry Requirements:

- Gross ELMAB3 score of 19 points or less (excluding CCA bonus points).
- Need to meet minimum subject-specific requirement. Check the DPP website for more info.

Application Period: Mon 16 Dec 2024 (2.30pm) to Thu 19 Dec 2024 (5pm)



..... N(A)-Level Student

Details of Admissions Exercises



NFP – NAFA Foundation Programme

NFP is a one-year practice-based programme that prepares N(A) Level holders to pursue a diploma in the creative arts. NFP students who successfully complete the programme will be offered a place in their chosen diploma course at NAFA.

NFP: go.gov.sg/applynafafp

Entry Requirements:

- Gross ELMAB3 score of 15 points or less (excluding CCA bonus points)
- Check the NAFA website for info on portfolio / admission test / interview or audition.

Application Period: Mon 16 Dec 2024 (2.30pm) to Fri 27 Dec 2024



..... N(A)-Level Student

Option to 5NA in 2025

Eligibility:

- Gross ELMAB3 score of 19 points or less (excluding CCA bonus points).
- Obtained grade 5 for all subjects included in ELMAB3

Application Period: Mon 16 Dec 2024 (2.30pm) to Thu 19 Dec 2024 (1pm)

Apply via the link in the next slide



Important for ALL students

Please complete the School Record Online form once you have completed your application or if you intend to opt for PFP / 5NA by **Thu, 19 December 2024, 2pm.**

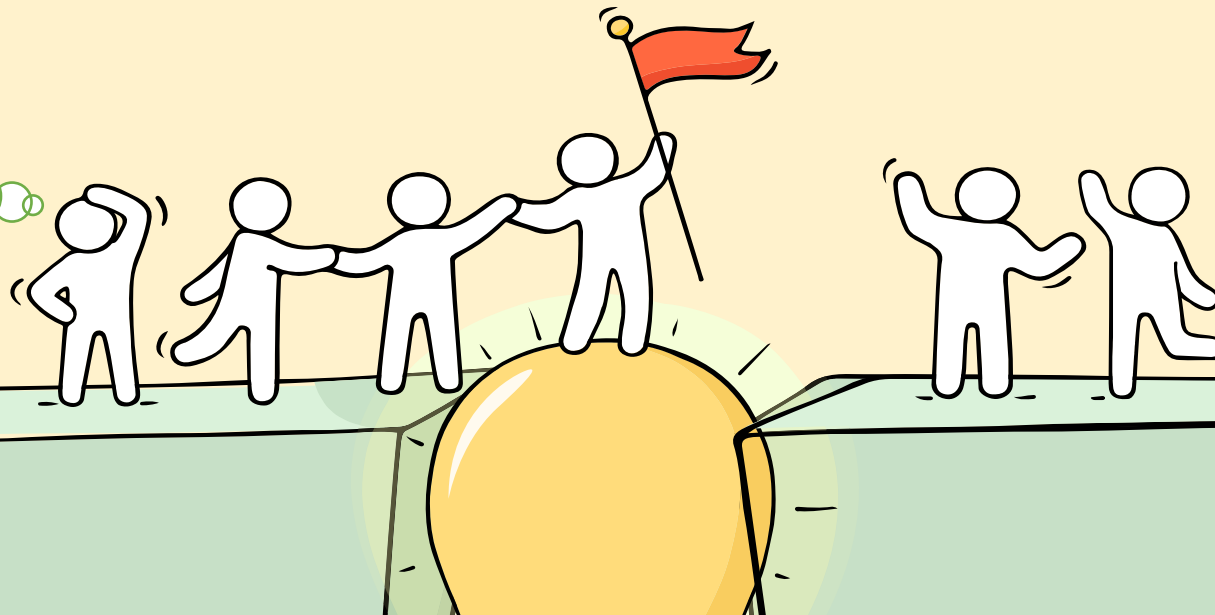
<https://go.gov.sg/nleveloption2024>



Reaching out for help is a sign of strength, not weakness.

If you have any questions about your options or are not coping well, do reach out to someone you trust and speak with them. It could be a parent/guardian, teacher, ECG Counsellor, School Counsellor or a friend that you can talk to.

*Is there
someone we
can speak
with?*



Support is readily available for you.

Reach out to an ECG Counsellor!

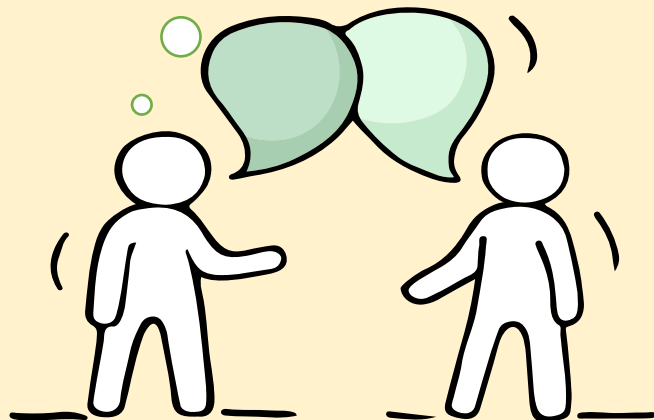
Who can we go to for ECG advice?

Meet our ECG Counsellor (Mr Lim) at the Meeting Room after today's session.

OR

Make an ECG counselling appointment via the ECG Centre @ MOE (Grange Road) at

<https://go.gov.sg/moe-ecg-centre>



Support is readily available for you.

There are other hotlines and chats available if you are more comfortable seeking help using these platforms. These can also be found in the infographic which you accessed earlier.



SOS provides round-the-clock emotional support for those in distress, thinking of suicide or affected by suicide.

Call: **1767**
(24-hour helpline)

Whatsapp: **9151 1767**
(24-hour Care Text)

TOUCHline is a helpline to provide youths with emotional support and practical advice.

Call: **1800-377 2252**

*Monday- Friday (Excluding Public Holidays):
9am – 6pm*

Community Health Assessment Team

(CHAT) provides personalised and confidential mental health checks and consultation for youths. To speak with a youth support worker, you can:

Visit: **CHAT Hub at *Scape, 2 Orchard Link, #04-01A**

Call: **6493 6500/ 6501**

Email: **CHAT@mentalhealth.sg**

Carey is an online platform by Care Corner that provides free mental health check-ins with mental health professionals. Find out more at:
<https://carey.carecorner.org.sg/>

mindline.sg is an online platform that provides tools, tips and resources to help you manage your health and well-being. Find out more at:

www.mindline.sg



eC2 is an e-Counselling Centre where you can talk to a trained counsellor about the issues you are facing, right where you are.

Chat with a counsellor at:

www.ec2.sg

*Monday – Friday (Excluding Public Holidays):
10am – 12pm & 2pm – 5pm*



**The N-Level
examination is not
the end point.**

**It is part of your
education journey.**

wishing
you 
ALL THE BEST

