

Welcome Back!

Release of 2024 GCE O-Level Results



2.30pm

- Opening Address by Principal
- Briefing on Post O Level- Progression
- Announcement of School Results

2.45pm

- Returning of Result Slips by FTs

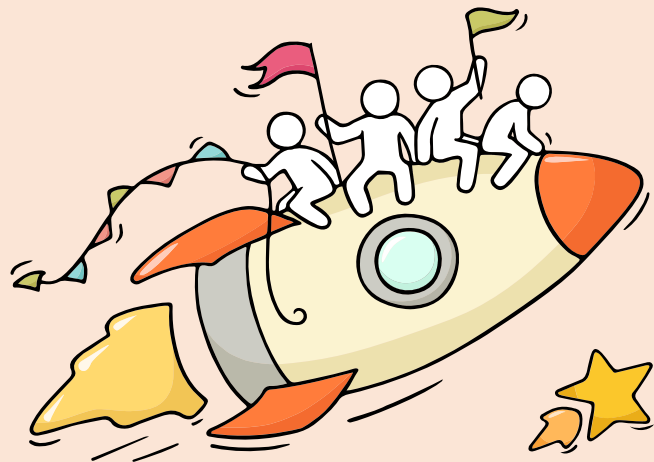
Join our Alumni Community!



<https://go.gov.sg/jyalumni>

Dear students,

You have worked hard to reach this stage. Let's celebrate our efforts!



Finally, we are about to receive our results!



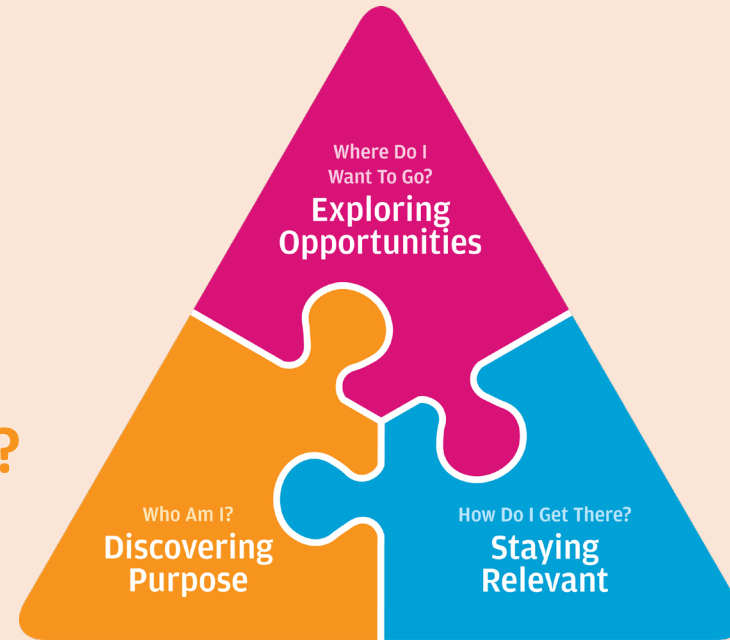
Thinking about Your Next Step?

Consider these questions...

Where do I want to go?

Who am I?

How Do I Get There?



Education & Career Guidance

In the infographic, you can find resources which can help you make informed decisions.

PLANNING YOUR NEXT STEP

These resources will help you chart your path ahead:



• What's Next Brochure
<https://go.gov.sg/whats-next-olevel>



• Contact the ECG Centre @ MOE
<https://go.gov.sg/moe-ecg-centre>



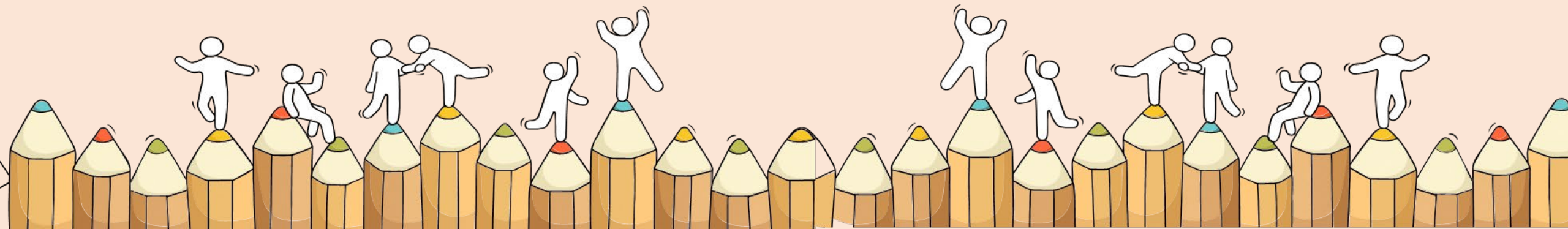
• MySkillsFuture Student Portal
<https://go.gov.sg/MySFSec>



• Chat with your school's ECG Counsellor

Admissions Exercises

Things to note



Details of Admissions Exercises

You can find the details of the various admissions exercises from the **Post-Secondary Admissions Exercises booklet** that can be downloaded from:

<https://www.moe.gov.sg/post-secondary/admissions>

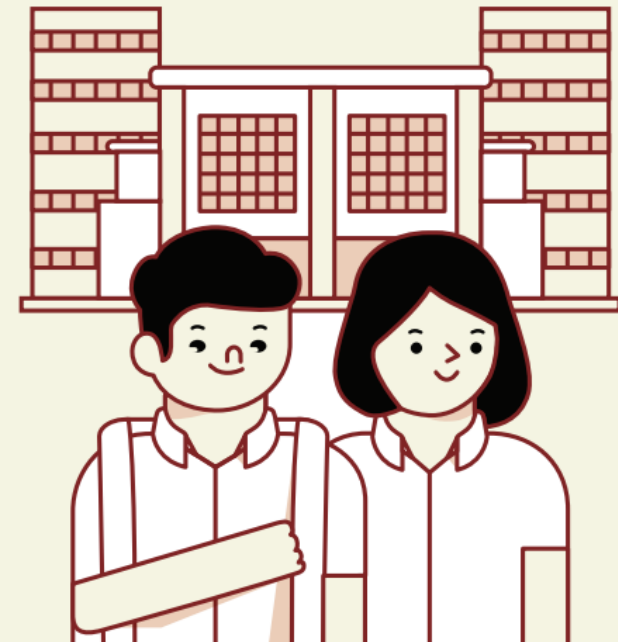
- JAE
- JIE 'O'
- LASALLE
- NAFA



A Guide to

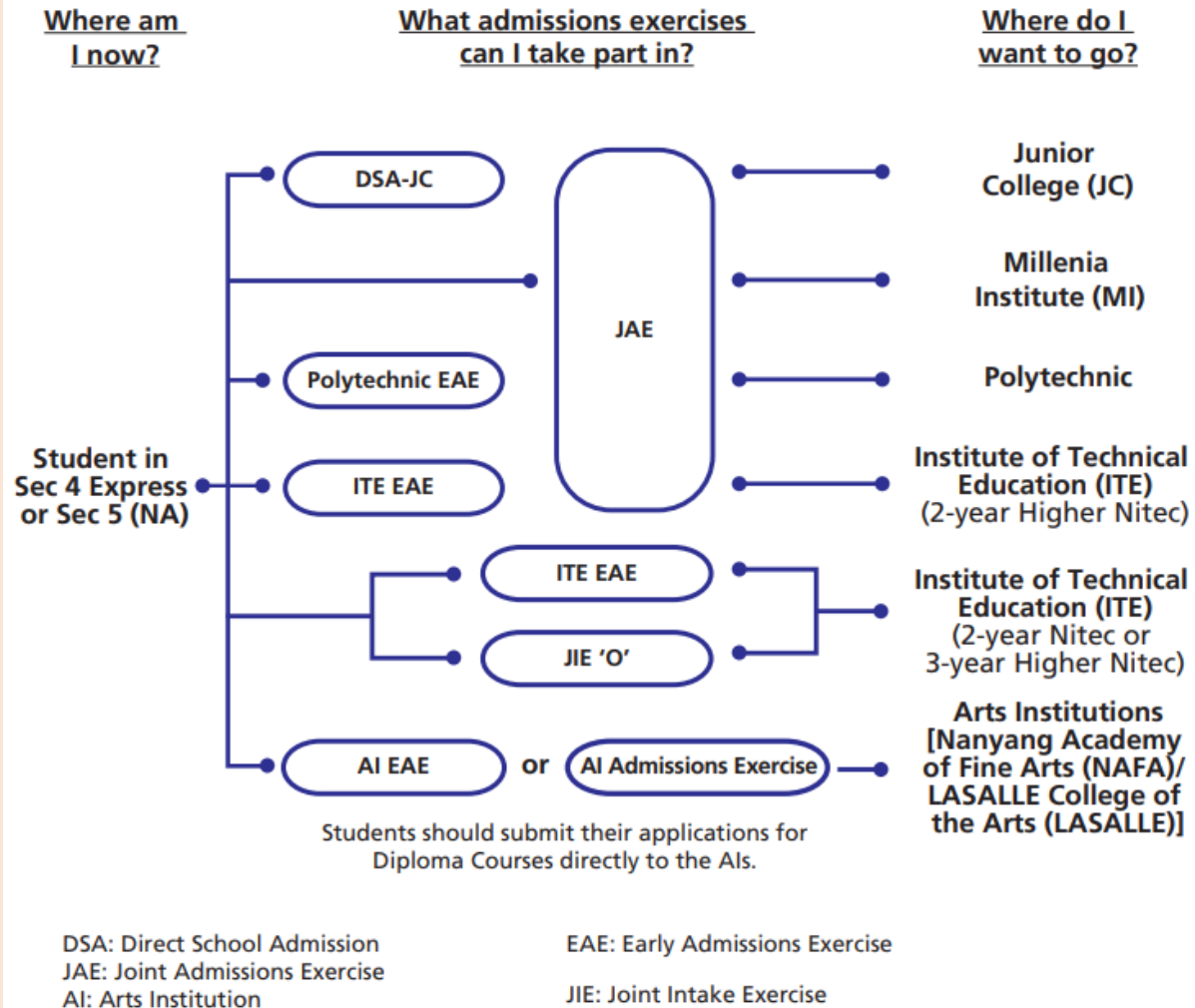
Post-Secondary Admissions Exercises

The various pathways you could explore after secondary school that provide opportunities for continuous learning



Ministry of Education
SINGAPORE

Post-Secondary Admissions Exercises for O-Level Students



<https://www.moe.gov.sg/post-secondary/admissions>

For the list of Nitec/Higher Nitec courses, please visit <https://www.ite.edu.sg/courses/full-time-courses/nitec-and-3-year-higher-nitec> .

Application Timeline

Admissions Exercises	LASALLE NAFA	JAE	JIE 'O'
Application Period	<i>Check respective schools' websites</i>	Fri 10 Jan, 4pm to Wed 15 Jan, 4pm	Fri 10 Jan, 4pm to Tue 14 Jan, 4pm



JAE – Joint Admissions Exercise

JAE enables GCE O-level holders to apply for courses offered by JCs, MI, polytechnics and ITE (2-year *Higher Nitec* courses).

JAE: <http://go.gov.sg/applyjae>

Application Period:

Fri 10 Jan 2025 (4pm) to
Wed 15 Jan 2025 (4pm)

1. Junior Colleges / Millenia Institute
Entry Requirements: Subject requirements + L1R5 (JCs) / L1R4 (MI)

2. Polytechnics

Entry Requirements: ELR2B2 and minimum subject requirements

3. ITE (2 year Higher Nitec)

Entry Requirements: ELB4 / ELR1B3 / ELR2B2 (depending on course)

Refer to JAE course listing here:
go.gov.sg/jaecoursebooklet

Your eligible courses:

- You meet the entry requirements for the below courses and are eligible to apply. However, a place in the course is not guaranteed as admission is based on merit, your choices and available vacancies.
- Course codes and descriptions can be found in www.moe.gov.sg/jaecourses.

JC/MI:

You are eligible for all JC/MI courses.

Polytechnic/ITE:

C27	C28	C29	C30	C31	C32	C34	C35	C36	C38	C41	C42	C43	C45	C46	C47	C49	C50	C51
C52	C54	C62	C65	C67	C69	C70	C71	C72	C73	C75	C80	C81	C85	C87	C89	C93	C94	C96
C97	C98	N11	N12	N13	N14	N15	N40	N41	N42	N43	N44	N45	N48	N50	N51	N53	N54	N55
N56	N57	N59	N60	N65	N67	N69	N70	N71	N72	N73	N74	N81	N82	N83	N85	N88	N91	N93
N94	N96	N97	N98	R11	R12	R13	R14	R16	R17	R18	R19	R21	R22	R24	R25	R26	R28	R32
R33	R34	R35	R36	R37	R39	R40	R42	R43	R45	R46	R47	R48	R49	R50	R52	R54	R55	R56
R57	R58	R59	R60	R61	R62	R63	R64	R65	S28	S29	S30	S31	S32	S38	S40	S42	S47	S48
S50	S53	S54	S63	S64	S66	S67	S68	S69	S70	S71	S73	S74	S75	S76	S88	S89	S90	S91
S94	S95	S98	S99	T01	T02	T04	T07	T08	T09	T10	T13	T18	T20	T22	T23	T25	T26	T28
T29	T30	T33	T35	T38	T40	T43	T45	T48	T50	T51	T53	T56	T58	T59	T60	T62	T63	T64
T65	T66	T67	T68	T69	T70	T71	V10	V11	V12	V13	V14	V15	V16	V17	V18	V19	V20	V21
V22	V23	V24	V25	V26	V27	V28	V29	V30	V31	V32	V33	V34	V35	V36	V39	V40	V42	V47
V49	V52	V53	V54	V55	V60	V61	V62	V63	V64	V65	V66	V67	V68	V69	V70	V71	V72	V73
V74	V75	V76	V77	V78	V79	V80	V81	V82	V84	V85	V87	V88	V89	V90	V91	V92	V93	V94
V96	V97	V98																

Note:

- You can also apply for 3-year *Higher Nitec* and 2-year *Nitec* courses in the Joint Intake Exercise (JIE) conducted by ITE. Please refer to www.ite.edu.sg for more information.



JIE 'O' – Joint Intake Exercise 'O'

The JIE 'O' is conducted to enable GCE O-Level holders to apply for the 2-year *Nitec* or 3-year *Higher Nitec* courses conducted by ITE.

JIE 'O': <https://go.gov.sg/applyjie>

Application Period:

Fri 10 Jan 2025 (4pm) to
Tue 14 Jan 2025 (4pm)

1. ITE (3 year Higher Nitec or 2 year Nitec)

Entry Requirements: ELB4 / ELR1B3 / ELR2B2 (depending on course)

Refer to JIE-O course listing here:
go.gov.sg/jieocourse



Arts Institutions – NAFA/LASALLE

GCE O-Level holders with the aptitude and interest to pursue the creative arts at the tertiary level may apply for diploma programmes at the Arts Institutions (AIs). Each AI runs its own admissions exercise, and interested students should apply directly to the institution.

The AIs also run their own Early Admission Exercise, an aptitude-based admissions exercise open to graduating O-Level students, final-year *Nitec* and *Higher Nitec* students from ITE and graduating Integrated Programme (IP) / International Baccalaureate (IB) Year 4 students. This exercise allows students to apply for and receive conditional offers for admission to NAFA and LASALLE prior to receiving their final grades.

Entry Requirements:

- English at Grade C6 or better, and an aggregate score of 25 points or better in 4 other GCE O-Level subjects

Application Period:

NAFA: Now until 31 Mar 2025

LaSalle: Now until 27 Jan 2025

NAFA: <http://go.gov.sg/applynafa>

LASALLE: <https://go.gov.sg/applylasalle>


Important for ALL students

Please complete the School Record Online form once you have completed your application by **Wed 17 Jan 2025, 12pm.**

<https://go.gov.sg/oleveloption>

Reaching out for support is a sign of strength

If you have questions about your options or are not coping well, you can reach out to trusted adults such as a parent/guardian, teacher, school Counsellor or ECG Counsellor. You can also talk to a trusted friend.

An illustration of two simple stick figures standing on a line, facing each other. Above them are two overlapping speech bubbles, one green and one light green. A large thought bubble above the figures contains the text 'Who can we go to for ECG advice?'.

*Who can we
go to for ECG
advice?*

Meet our ECG counsellors at the Meeting Room and Conference Room after today's session.

OR

Make an ECG counselling appointment via the ECG Centre @ MOE

<https://go.gov.sg/moe-ecg-centre>



O Level ECG Support



Education & Career Guidance



<https://go.gov.sg/olevelecgssupport-miss-suma>

For quick questions, please drop an email to:
ecgmisssuma@gmail.com



Support is readily available for you.

There are other hotlines and chats available if you are more comfortable seeking help using these platforms. These can also be found in the infographic which you accessed earlier.



<https://go.gov.sg/olevelstudentresource>

SOS provides round-the-clock emotional support for those in distress, thinking of suicide or affected by suicide.

Call: **1767**
(24-hour helpline)

Whatsapp: **9151 1767**
(24-hour Care Text)

TOUCHline is a helpline to provide youths with emotional support and practical advice.

Call: **1800-377 2252**

*Monday- Friday (Excluding Public Holidays):
9am – 6pm*

Community Health Assessment Team

(CHAT) provides personalised and confidential mental health checks and consultation for youths. To speak with a youth support worker, you can:

Visit: **CHAT Hub at *Scape, 2 Orchard Link, #04-01A**

Call: **6493 6500/ 6501**

Email: **CHAT@mentalhealth.sg**

mindline.sg is an online platform that provides tools, tips and resources to help you manage your health and well-being. Find out more at:

www.mindline.sg



Carey is an online platform by Care Corner that provides free mental health check-ins with mental health professionals. Find out more at:
<https://carey.carecorner.org.sg/>

eC2 is an e-Counselling Centre where you can talk to a trained counsellor about the issues you are facing, right where you are.

Chat with a counsellor at:

www.ec2.sg

*Monday – Friday (Excluding Public Holidays):
10am – 12pm & 2pm – 5pm*

**The O-Level examination
is not the destination.**

**It is part of your
education journey.**



wishing
you 
ALL THE BEST